



# Guilsborough School

*Guilsborough Multi Academy Trust*





# Contents

---

4-5	Welcome
6-7	Sustained Success
8-9	Striving for Excellence
10-11	GOALS
12-13	A Supportive Community
14-15	Bring Learning Alive
16-17	Our Curriculum
18-19	Beyond the Curriculum
20-21	Fantastic Facilities
22-23	A Successful Sixth Form
24-25	Care and Guidance
26-27	Learning Support
28-29	Admission Arrangements
30-31	About Us





*"The headteacher and leadership team, well supported by the governors, are committed to making the school's mission statement 'Striving for excellence' a reality."*

OFSTED 2014

# Welcome to our School



Mrs C A Staley, BA (Hons) MEd  
Executive Headteacher

At Guilsborough we believe that learning should be enjoyable and challenging. This belief, combined with the excellent teaching skills and commitment of our staff and the enthusiasm and hard work of our students, lies at the heart of our success.



Mrs J S Swales, BSc (Hons)  
Associate Headteacher

We are passionately committed to the achievement of every individual student and to providing high standards of teaching and learning. Our reputation with the local and wider community rests on consistently providing quality education for students of all abilities.

We are very proud of our students and their achievements and would like to invite all prospective parents and students to visit us on our Open Evening or attend Musical and Dramatic performances; this is the best way to experience the ethos and family atmosphere of the school.



# Sustained Success

*We are passionately committed to the achievement of every individual student and to providing high standards of teaching and learning.*

Our reputation with the local and wider community rests on consistently providing quality education for students of all abilities.



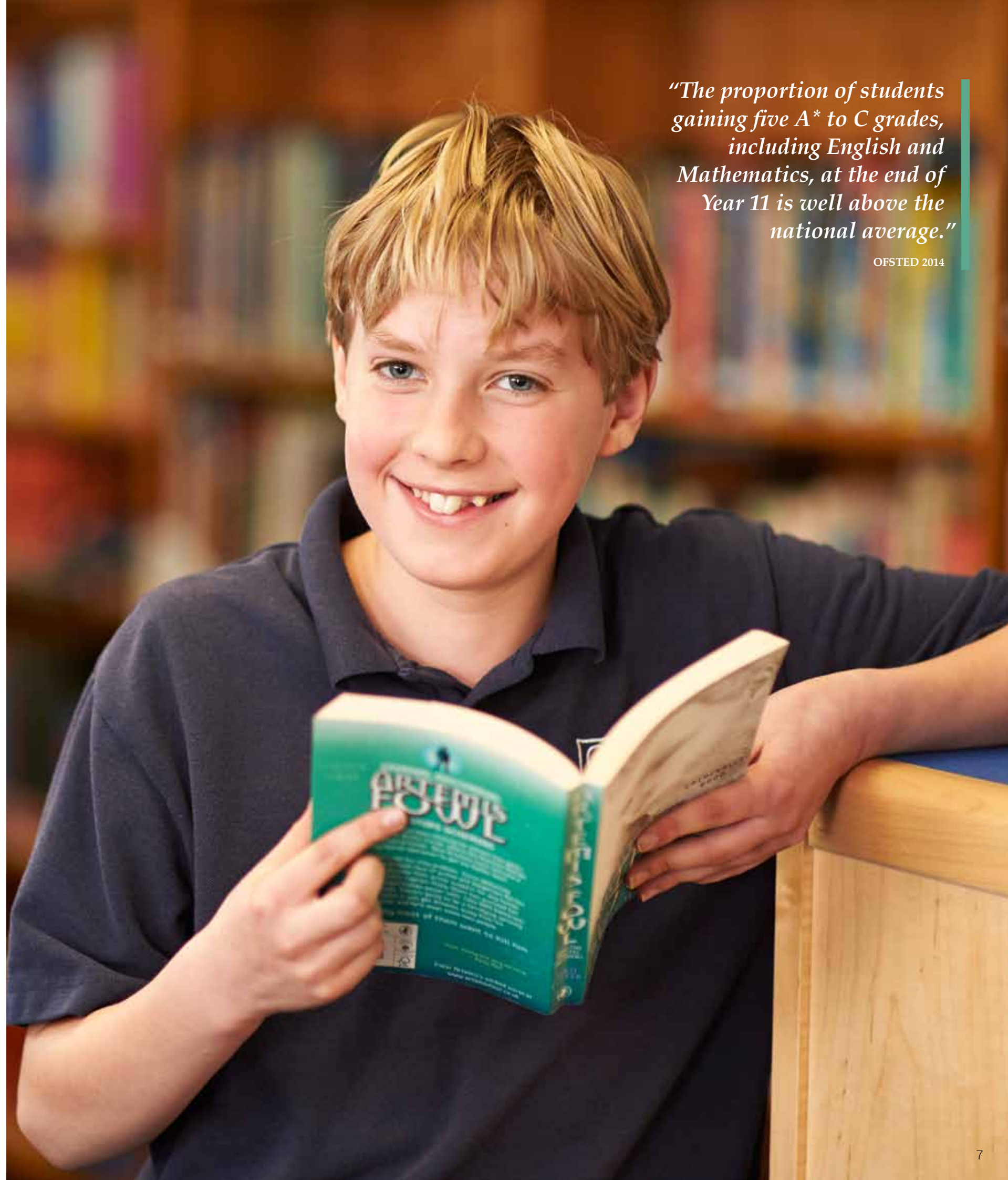
Excellent academic achievement comes from motivating students to engage in lessons, challenge their knowledge and encouraging the fulfilment of their academic potential.

Our school's results consistently exceed national benchmarks and our students go on to study in our successful Sixth Form and top universities across the country, including Oxford and Cambridge.

Whilst we are justifiably pleased with our examination record it is important to mention that we are not an 'examination factory'. As a school we place a great deal of emphasis on students participating in a wide range of extra-curricular activities and enjoying both their studies and all the other opportunities on offer at Guilsborough School. We want students to enjoy, participate and achieve at school, and to develop high self-esteem.

*"The proportion of students gaining five A\* to C grades, including English and Mathematics, at the end of Year 11 is well above the national average."*

OFSTED 2014





# Striving for Excellence

---

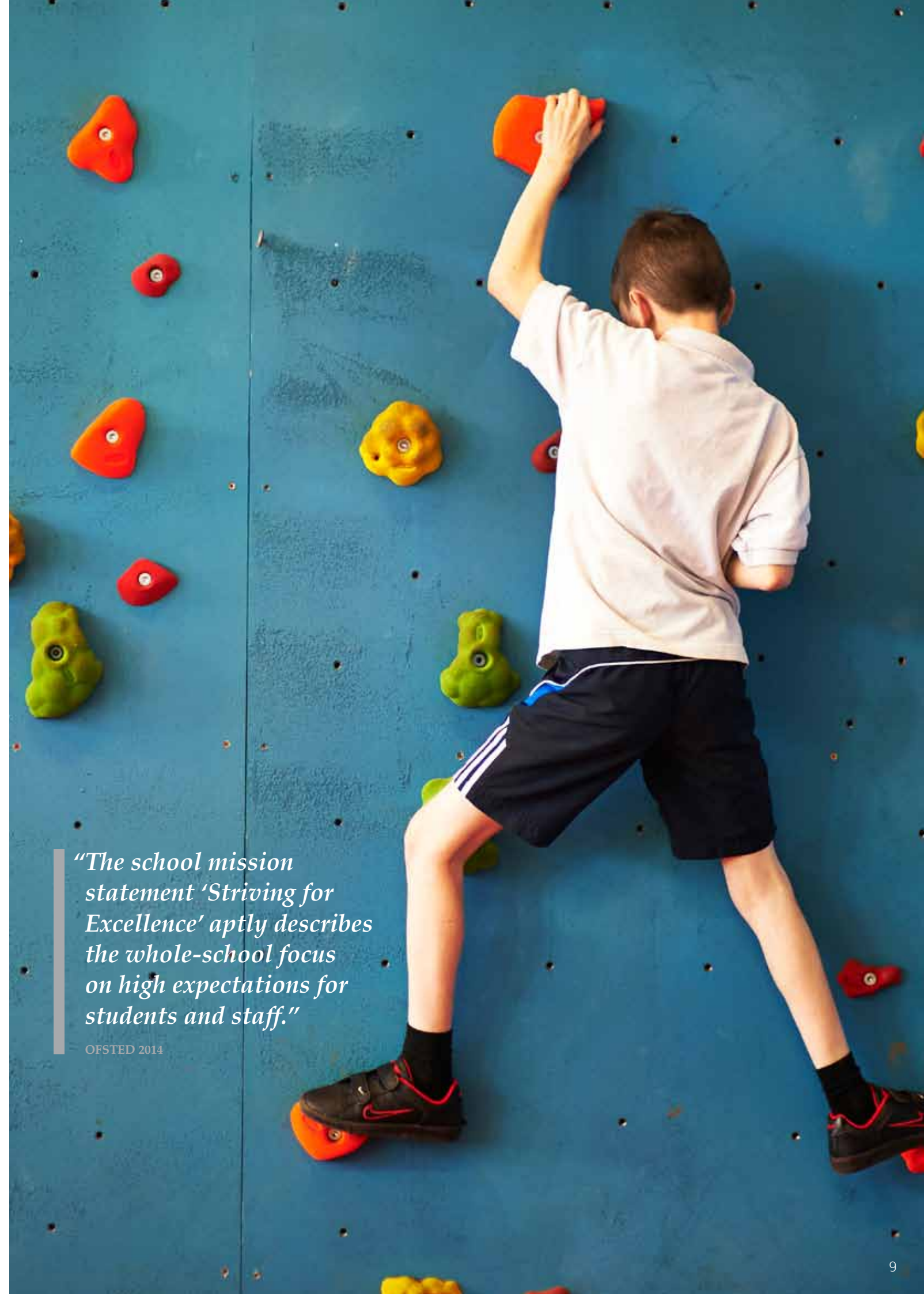


**The Academy will develop and sustain:**

- Highly effective governance as a converter academy
- A safe, inclusive community for all students
- Outstanding attendance, punctuality and behaviour
- Outstanding attainment and progress
- Outstanding teaching and learning
- An inspiring, inclusive, innovative curriculum
- Enrichment opportunities for all students
- An effective relationship with parents and our community

*"The school mission statement 'Striving for Excellence' aptly describes the whole-school focus on high expectations for students and staff."*

OFSTED 2014





# GOALS



**Guilborough wins when we focus on:**

**Organisation**

**Attitude to Learning**

**Language and Courtesy**

**Supportive Behaviour**

**Guilborough School has always had a positive behaviour policy with the aim of ensuring a calm, orderly working environment conducive to effective learning.**

With this in mind we have developed the concept of GOALS, an acronym meaning: Guilborough wins when we all focus on Organisation, have a positive Attitude to learning, use good Language and Courtesy and show Supportive behaviour.

Having a simple statement of GOALS provides freedom from lists of rules

that are impossible to define and don't allow appropriate interpretation for each individual. For example, the expectations regarding 'Organisation' are different for a Year 7 student to a Year 11 student.

GOALS allows for lots of positive conversations between staff and students especially if an aspect of attitude or behaviour needs re-direction. GOALS are easily understood by everyone and students can relate to the concept.



*"Students are confident that if they experienced any problems, their teachers would do all that they could to help them."*

OFSTED 2014

*Guilborough is a National Support School, with Mrs. Staley working as a National Leader of Education.*

## A Supportive Community

**We have a strong school community underpinned by our Year Teams. Our dedicated Year Teams are supported by committed form tutors and progress leaders who work with students on a daily basis providing help and guidance in order for students to be successful in school, as well as outside of school.**

Form tutors will monitor that students have the correct uniform as well as keeping a close eye on organisation, progress and general welfare of students.

The students are further supported by a range of mixed-age activities across the school including paired reading, subject mentoring and an excellent mentoring programme led by many of our sixth form.

Students can take part in Year Voice and be part of the senate. In this way they are encouraged to express their views and shape the future of the school.



# Bringing learning Alive

*At Guilsborough we passionately believe in developing a lifelong love of learning to allow our students to leave as confident, independent learners, ready to face the challenges of living in the 21st century.*



**We will help our pupils develop a love of learning**

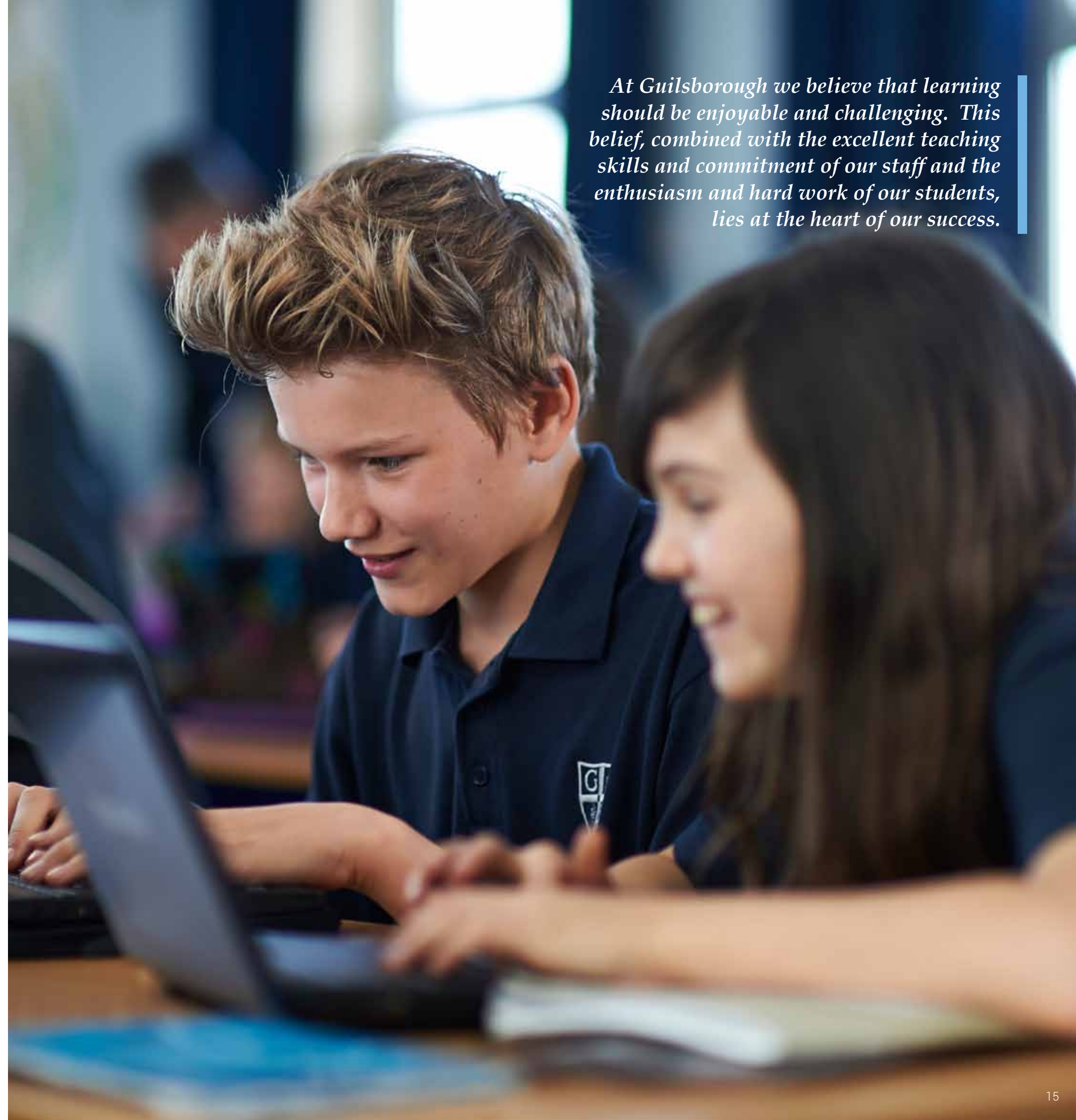
We seek to develop more than merely academic qualifications in the classroom by providing a broad and balanced curriculum delivered through an innovative range of teaching techniques.

As a result Guilsborough students will not be passive learners, but will be encouraged to become both active and independent learners in order to provide them with the skills and knowledge to thrive in the modern workplace.

This independence and adaptability is further strengthened through the teaching of spiritual, moral, social and cultural awareness which forms a core theme and is delivered throughout the curriculum both inside and outside of the classroom.

Whichever pathway our students choose to pursue, the key skills and attributed developed at Guilsborough should leave them well placed to fulfil their potential.

*At Guilsborough we believe that learning should be enjoyable and challenging. This belief, combined with the excellent teaching skills and commitment of our staff and the enthusiasm and hard work of our students, lies at the heart of our success.*







# Our Curriculum

*Our curriculum is the whole range of learning opportunities that students have access to throughout their years at Guilsborough. We aim to make this exciting, challenging and fun so that all students develop the knowledge, skills and interests that will enrich their lives.*

## **The Curriculum (in the classroom)**

We constantly review and develop our curriculum so that students have access to subjects that will maximise their learning and future options. We have developed pathways to match need and aspirations.

Our KS3 includes all of the core and foundation subjects including English, Maths, Science, ICT, PE, MFL, Music, History, Geography, RE, Drama, DT and Art to give a broad and balanced learning experience for all.

At KS4 additional subjects are offered such as Business Studies, Child Care, Health, Personal Finance and Social Care. At KS5 additional subjects include Media Studies, Psychology, Travel and Tourism and Further Mathematics.

## **Extra Curricular**

There is an incredibly extensive range of clubs and activities that are offered at lunchtime and after school.

All students are expected to take part in these activities which are essential parts of their learning; developing skills, extending talents and building character. Sports, Music, Drama, Debating and ICT feature very strongly in these clubs and the opportunities are extensive where all interests are catered for.

All students have the opportunity to take part in Drama and Music productions. There are visits and trips locally, nationally and internationally that all students can take part in: Skiing, World Challenge, German and Sport Tours.

There are also subject visits such as Languages, Physical Education and Humanities as well as visits in Britain. All of these are true learning and development opportunities for students – as well as great fun.





# Beyond the Curriculum

Guiltsborough is accredited as an International School. We have a range of projects and visits which help to give our students a wider perspective on the world. Students will understand and appreciate diversity and the interdependence of people in a global community.

We are proud of the quality of opportunities available to our students in such activities as Music, Sport, Drama, Debate and Travel.

We nurture individual strengths within our students and encourage them to explore a wide variety of interests within and beyond the school curriculum. Our aim is to develop thoughtful, kind and considerate adults, who will not only contribute to the school but also to the wider community.

Students' personal development and happiness are very important to us and our extensive programme of extra-curricular activities, including outstanding Music, Drama and Sports provision, supports their success.

A key focus of the school year is the annual production, which showcases the outstanding abilities of our musicians and actors, technical and ICT teams.





# Fantastic Facilities

*Guilbsborough School has fantastic facilities to support learning through and beyond the curriculum.*



The Music and Drama suite includes the Studio, practice rooms and two new Apple Mac ICT suites to support learning. In the sixth-form Media Studies studio we also have Apple Mac Recording facilities.

An extensive range of sports is offered, from rugby, netball, cricket and football to trampolining, horse-riding, basketball, aerobics and gymnastics.

Students at Key Stage 4 are given a choice of options to help them develop a sporting interest for life. Team sports are very successful with the school a frequent winner in local sporting leagues.





*“Sixth form students make a very strong contribution to whole-school behaviour and safety...They are excellent ambassadors for the school.”*

OFSTED 2014



*“Be the change you wish to see in the world.”*

MAHATMA GANDHI

## A Successful Sixth Form



Every year our most able students achieve very highly and we encourage and support students to aim for and attain places at top universities. We also provide strong support for alternative routes to higher qualifications post 18, supported by our innovative Career Academy programme.

Our main aim is for each of our students to reach their potential and to be well-prepared for the future. To achieve this, we provide a secure and supportive environment; our students benefit from expert teaching, small class sizes and individual advice and guidance from experienced and caring staff. This is supplemented by an extensive enrichment programme.

Our Sixth Formers have privileges and are treated like mature young adults, but we also have high expectation of them as A-Level students and as role models for the younger students in the school.

For further information see separate Sixth Form brochure on the website.





# Care and Guidance

*Caring and responsible attitudes and behaviour are fostered through a strong personal and social education programme and all students take part in community projects.*

We want to create an outstanding climate for learning. We want our young people to feel happy, cared for and well supported so that they are able to flourish in the classroom. We have therefore put in place a system of pastoral care that is proactive in its approach to provide the support and guidance that our students deserve.



Alongside the Year Teams we have an excellent pastoral care team. A full time dedicated team of non-teaching staff are committed to supporting students with a wide range of social and emotional needs.

The Pastoral Care Team work closely with the Progress Leaders to match and signpost the most effective agencies and support workers

for the students. This may include access to a counsellor, behaviour management support, Art Therapy, CAHMS, Self Esteem workshops or Anger Management groups.

The Pastoral Team are also on hand to deal with first aid and medical needs. They rigorously support work with Child Protection and other safeguarding agencies.



# Learning Support

*We have a strong tradition of supporting the inclusion of all young people in our local community. We aim to provide the best learning environment for all young people including those who may have individual needs.*

During their time at school some students will have special needs which may relate to learning, health or emotional factors. We do our best to respond to each student's needs, and use a variety of resources and strategies for this purpose.

We operate a flexible system which supports both students and staff in a variety of ways. There is in-class support for specific needs, out-of-class intervention, specific learning resources to support needs, frequent professional development for staff to enhance

knowledge and understanding of learner needs and tailored curriculums.

We also enlist the professional expertise of a full-range of outside support agencies and hold regular meetings between these agencies, teachers and parents in relation to particular students' needs. In addition, we use a student-centred review format where students take a full and active role in identifying steps to develop and make progress, in order to become more self-confident and independent.

*"Students say that they enjoy coming to school and they speak positively about their teachers' enthusiasm and commitment. One told inspectors, 'Teachers go the extra mile by offering their time outside lessons, at lunchtime and after school.'"*

OFSTED 2014







# Admission Arrangements

## Admission Arrangements

Prospective parents and their children are always welcome to make an appointment to come and look around the school and each year we hold an open evening in the first part of the autumn term. Each year a number of students join us from Northampton, Daventry and further afield.

The admission number for September 2015 will be 232 to accommodate demand for places.

Following the allocation of places to pupils who have a statement of Special Educational Needs which names the school as appropriate provision, when there are more applications for places than there are places available, priority will be given in the following order:

1. Children in public care (looked after children) or previously in public care.
2. Pupils who live in the linked area associated with the school.
3. Pupils who have an older brother or sister continuing at the school at the time of admission of the younger child.
4. Pupils attending the designated contributory primary schools and continuing in attendance until the final offer of places is made.
5. Other pupils.

If the admission number is exceeded within criterion 2, priority will be given to those who live

furthest from the nearest alternative school. If the admission number is exceeded within any other criterion, priority will be given to those who live closest to the school, using NCC's GIS.

## Transition Programme for Year 6 Students and Parents

At the beginning of the autumn term, all Year 6 students will receive a letter via their primary school, containing their child's unique UID code to enable an application form to be completed online.

There is a programme of events to allow parents and students to see the school. The first event is our Open Evening which will be held on Wednesday 15th October 2014 from 6.30pm to 8.30pm with presentations by the Headteacher at 6.45pm and 7.15pm.

There are close liaisons with Year 6 students at our partner primary schools:

- All successful Year 6 students are invited to spend a day at Guilsborough.
- A Parent Induction Evening is arranged in the summer term.
- There are opportunities for students to visit the school for a variety of activities throughout the year.
- During the summer term, Guilsborough School staff visit each school to meet Year 6 students.

Parents of students who are joining the school from outside the catchment area will be notified of these dates.

## Other New Admissions

- In the case of transfer requests for year groups other than Year 7, parents should contact the Admissions Team at Northamptonshire County Council at [www.northamptonshire.gov.uk](http://www.northamptonshire.gov.uk) and follow the links to complete the application form or call them on 0300 126 1000
- Where families move into the area, we are pleased to make individual arrangements to meet personal needs. A visit to the school can be arranged. Please telephone the school office for an appointment.
- Please can we request that parents contact the school well in advance particularly if they wish their child to start in September. Late applications may result in arrangements not being in place for children to start at Guilsborough on the first day of term. This also applies to late entries for Year 6.

**For more information on admissions**  
[www.guilsborough.northants.sch.uk/information/admissions](http://www.guilsborough.northants.sch.uk/information/admissions)



# Guilsborough Multi Academy Trust

Guilsborough School became a converter academy in 2012 and this has enabled us to have more control over our curriculum and funding.

We have been able to develop our premises to a high standard and work to support our schools.

This year we have joined together with Naseby Church of England Primary school to form a small Multi Academy Trust- enabling us to work very closely

together and provide support to ensure this small school remains sustainable at the heart of the village.

We have close relationships with all our family of primary schools and work hard to enhance these links in order to ensure the progression to secondary school is successful and happy for both students and parents through a series of planned events.



# School Awards

## Enhancing the Curriculum



### Arts Award

Personalised learning at Guilsborough is important, therefore, a number of the gifted and talented art students in Year 9 have the opportunity to participate in the Arts Award Bronze qualification. Following the Arts Award course develops art knowledge, creative and communication skills and the ability to lead projects. An Arts Award is useful when looking for further education and job opportunities in the arts and other fields. The Arts Award at Guilsborough runs alongside the Year 9 Art curriculum and, like this, acts as a preparation for GCSE.



### Career Academy

Career Academies UK helps raise young people's aspirations and bridge the gap between education and work by giving them access to real experience of the world of work. Providing a structured programme of paid internships, mentoring by employer volunteers, motivational lectures and workshops to give 16-19 year olds the work experience and skills they need to be able to perform more effectively in the wider world. This highly successful programme is designed to complement students' studies and was cited in April 2014 as a go-to organisation in the government's statutory and non-statutory careers guidance for Schools. Guilsborough School is currently running the only Career Academies UK programme in Northamptonshire.



### Career Mark

Career Mark is a prestigious careers education, information, advice and guidance (CEIAG) award. The Award provides evidence that our students have structured and quality support to achieve positive and effective career planning; with excellent advice offered at all ages.



### Challenge Partners Hub

Guilsborough is a member of Challenge Partner. A national school improvement network focused on collaboration between schools.



### Healthy Schools Award

In March 2013 we celebrated our success in achieving Healthy School status. The award is a Government support initiative which aims to raise the achievement of young people by promoting and improving all aspects of health and well being. We are now committed to continue to develop and implement enhancement projects to promote health and well being and in turn, support our pupils to do their best.



### ICT Mark

Recognises our positive approach to ICT and the benefits it is bringing to our students. ICT can be used in every aspect of learning and it is essential our children are equipped for the modern world. The award recognises the school's success in developing the strategic use of ICT, in both administration and across the curriculum. It provides parents and carers with proof that students are attending a school at the forefront of modern technology.



### International School Award

We were awarded the prestigious International School Award in recognition of the work we do to foster an international dimension in the curriculum. In particular we have close links with Germany, Austria and now Spain. We are very proud of our new cross curricular activities.



### Leading Edge

Guilsborough is a designated 'Leading Edge' school, an award for high performing schools committed to innovation and partnership to raise achievement.



### Leicester Training School

Leicester Training School: Guilsborough is a senior partner in the Leicester Training School hub for professional development.



### National Support School / National Leader for Education

Guilsborough School is a National Support School. The Headteacher (NLE) and her staff use their skills and experience to support schools in challenging circumstances, to help raise standards.



### Northamptonshire Music Education Hub

Working in partnership with the Northamptonshire Music and Performing Arts Trust (NMPAT), Guilsborough supports a Saturday music school provision for all ages and a wide range of individual and group music activities.



### Swan

'Learning through Opportunity' – Education partnership of local secondary schools working together to raise attainment and achievement for all students and provide school based teacher training through school direct and SCITT.





## **Guilborough School**

*Guilborough Multi Academy Trust*

A: West Haddon Road, Guilborough, Northampton NN6 8QE

T: 01604 740641 | E: [info@guilborough.northants.sch.uk](mailto:info@guilborough.northants.sch.uk)

F: 01604 749104 | W: [www.guilborough.northants.sch.uk](http://www.guilborough.northants.sch.uk)

Executive Headteacher: Mrs C A Staley, BA (Hons) MEd

Associate Headteacher: Mrs J S Swales, BSc (Hons)

[headteacherpa@guilborough.northants.sch.uk](mailto:headteacherpa@guilborough.northants.sch.uk)