



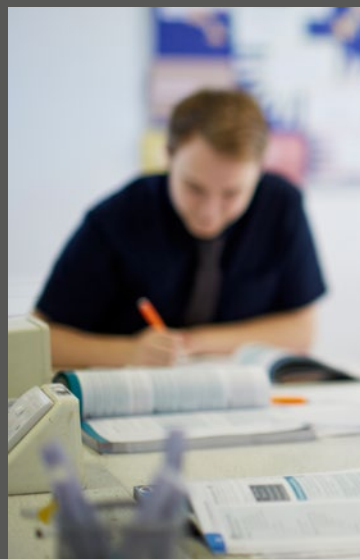
**KINGSBURY
SCHOOL
SIXTH FORM**

Prospectus // 2017

//Enthuse //Aspire //Achieve

//Contents

- 05 Introduction from the Headteacher
- 07 Welcome from the Sixth Form Staff
- 10 Qualifications and Advice
- 12 Finance and Transport
- 17 Our Courses
- 42 North warwickshire and Hinckley College
- 50 Further info





// Welcome



//Introduction from the Headteacher



Your choice of where you are to study at Post 16 and which courses you want to take, is one of the most important decisions you will make in your life; it can help to determine your university, your career and your future. I am delighted, therefore, that you are considering Kingsbury School's Post 16 offer, and I hope that the information in this prospectus will not only give you essential practical advice but will also provide you with a clear picture of life with us.

Over the last 6 years we have made rapid progress at GCSE which led us to make a Post 16 offer in September 2013. We believe that our offer is attractive and has benefits over other institutions:

- We believe that the quality of education is always about the quality of staff and can vouch for our excellent teaching teams, who have been to some of the best universities and are ideally suited therefore to help you achieve your goals.
- We are being coached as a new Post 16, by an outstanding college, helping us to ensure that you get the very best throughout your time with us.

As a school we have high expectations. Consequently we are looking for students who give their studies and the whole school experience their full commitment.

With your hard work and our support we expect to be able to proudly boast that everyone who wishes to attend university, whether this be Oxford, Cambridge, Imperial College, UCL, Queen Mary, Royal Holloway, LSE, SOAS, Warwick, Bristol, Nottingham, Leeds or any of the hundreds of other institutions, has gained a place of their choice.

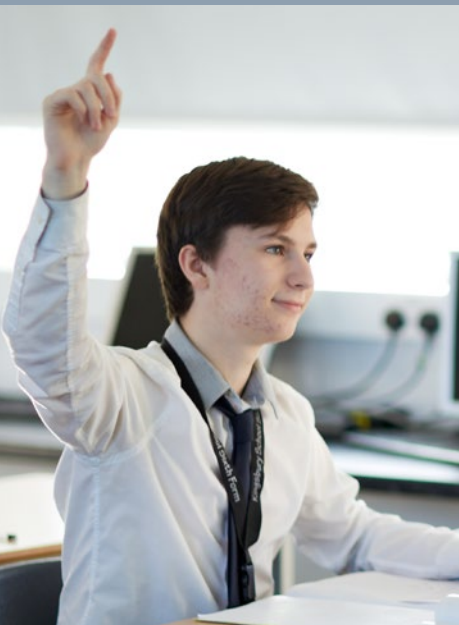
No written information can give the answer to all your questions, so please do not hesitate to contact us if you have any queries having read this prospectus.

We look forward to your application.

M Clarke

Mr M Clarke
Headteacher

This is an important and exciting time in your educational life. Your compulsory education is about to come to an end and you now have to make a decision about your next step. The fact that you are reading this prospectus probably means that you have already decided to continue with full time education and study A Levels or a BTEC qualification at Post 16. This is a good choice as employers are increasingly seeking young people with higher qualifications and both are a good step towards studying at university.



//Message from the Director of Post 16



Kingsbury School students will tell you that they enjoy the good relationships that they have with staff and that they have been well supported in aiming to achieve or exceed their target grades at GCSE. This relationship will continue and strengthen in the Sixth Form where the classes will be smaller and all students are studying courses they are passionate about; class sizes this year have ranged from 4 to 17.

Kingsbury School has a small and friendly atmosphere. Those of you who have studied your GCSE's here, will know the staff well. Your teachers know your strengths and weaknesses and your tutor will be able to offer you excellent support and guidance throughout your two years in the Sixth Form.

We have specialist staff here who know what you have studied before entering the Sixth Form, many will have taught you before and will quickly build on your knowledge and skills. We have a strong team of curriculum leaders who work alongside your teachers to ensure that all of your lessons are engaging, challenging, enjoyable and that you make good progress.

At Kingsbury School we offer a wide range of A Level and BTEC courses in conjunction with North Warwickshire and Hinckley College. Being a Sixth Form student is very different from what you have been used to and has many challenges and new responsibilities as the senior students in the school.

I am sure if you continue your education with us, you will find your studies stimulating, enjoyable and rewarding.

D Hart

Miss D Hart
*Director of Post 16,
Assistant Headteacher*

//Message from the Head of Post 16



Kingsbury Sixth Form is a small and cohesive environment for our students.

Here at Kingsbury, our motto of Enthuse, Aspire, Achieve highlights the fundamental aims of our Post 16 provision. Through a personalised and supportive approach to the curriculum, it is our goal to develop students into successful members of our community and equip them with all the skills required to make them attractive to employers and Universities in the 21st century. Students will also benefit from our tutor programme, which focuses on study skills, research into higher education and topics that are relevant to the wider world.

As a Sixth Form, we have high expectations. Consequently, we are looking for students who give their studies and the whole school experience their full commitment. With your hard work and our support we expect to be able to proudly boast that everyone who wishes to attend University, wherever that may be, has the best opportunity to do so. Due to our close knit community, we nurture great relationships between students and staff. We monitor academic performance closely on a regular basis. In addition, students benefit from a wealth of pastoral support during their studies including benefitting from having a small tutor base. Each student has a Sixth Form Progress Tutor who will support their academic and personal development. Their progress tutor is their first point of contact about any personal or academic concerns.

The student will have contact with their tutors on a daily basis. Each tutor group will be part of one of three houses; Capella, Polaris and Vega. Students and tutors will also be supported by the Head of Post 16. We believe strongly that it is imperative to have a good link with parents, ensuring that parents are informed of their son/daughters progress and any problems that may arise throughout the year.

There will be opportunities to meet with subject and progress tutors at Parents Evenings which occur twice a year. In addition, subject teachers and tutors are always available to meet to discuss any concerns of individual students. We are very proud to be able to offer exceptional facilities in our purpose designed Sixth Form Common Room which encompasses a modern and communal learning space for personal study sessions, throughout the day as well as before and after school. Our Common Room boasts facilities for students to study informally, in the comfy seating area, alternatively, students can use the desk space at the rear of the Common Room to study in a more structured way. Furthermore, there is a self-contained kitchen, solely for the use of the Sixth Form. Students also make use of our Library for timetabled study sessions, where students can complete homework, revise, research, or read around their subject areas. I look forward to working with you in the near future,

S Brown

Miss S Brown
Head of Post 16

"Kingsbury is a friendly school where relationships are strong and students take an active role."

OFSTED 2011



//Why should I study at Kingsbury Sixth Form?



Support from a local college with outstanding results.

The use of specialised equipment.

Up-to-date Higher Education and careers advice.



A diverse range of AS, A2 and BTEC qualifications.

Personal attention to help you with your studies.

Private study areas for Sixth Form Students.

//Kingsbury School Sixth Form is open to any student, whether or not they currently attend Kingsbury, providing that they meet the entry requirements

What Qualifications do I need?

- All students must achieve a minimum of 5 GCSEs graded A*-C.
- Students must also have excellent attendance (95% or above in year 11) and a positive attitude towards learning.
- To study three or four AS/BTEC Subsidiary Diploma courses students must achieve the specific criteria for the subjects they wish to study as well as 5 GCSEs graded A*-C
- To study 5 AS/BTEC courses students must achieve a minimum of A*/A grades or a BTEC distinction in five different subjects.
- NB To progress to Year 13 courses, students must have achieved a grade D or a Pass for BTEC certificate in that subject as well as excellent attendance in Year 12.

Careers and University Advice

Expert careers and University advice will be available to all students. Several trips to University open days will run throughout the year to give students a chance to explore local Universities. SPEC days will give dedicated time to applying for a University place and writing curriculum vitae.



//Post 16 Financial Support

The 16-19 Bursary Fund

The Government has set aside some money for schools, colleges, training providers and Local Authorities to allocate to young people who need financial support to stay on in further education or training. This is called the 16-19 Bursary Fund.

It could help you with any education-related costs that may arise during the school year, including essentials like a meal during the day or transport to your school or college. Or you might need extra help to buy books, clothing or equipment for your course, or pay for educational visits. There are two types of bursaries, Vulnerable and Discretionary bursaries.

Vulnerable student bursary

You can apply for a vulnerable bursary if you:

- Are in Local Authority Care; or have recently left Local Authority (are a Care Leaver); or
- Receive Income Support or Universal Credit in your own name; or
- Are disabled and receive both Employment Support Allowance and Disability Living
- Allowance or Personal Independence Payments in your own name.

- You could receive up to £1200 through a vulnerable student bursary. This is decided by the school or college and is dependent upon the course that you study, your attendance and how far you have to travel.

Discretionary student bursary

You can apply for a discretionary bursary if you aren't eligible for a vulnerable bursary but you need financial help to stay on in further education or training. The school will decide whether you will receive a discretionary bursary, how much you will get and what it should be used for.

The school will set its own eligibility criteria, a limited amount of money is available and Kingsbury must ensure it is spent on the correct students.

Clare Bacciochi Educational Fund

Parents and students are also able to apply for financial support from the Clare Bacciochi Educational Fund in the same way as they have been able to throughout Key Stage 3 and 4.



"Students say the small size of the school means they get on well"

OFSTED 2011



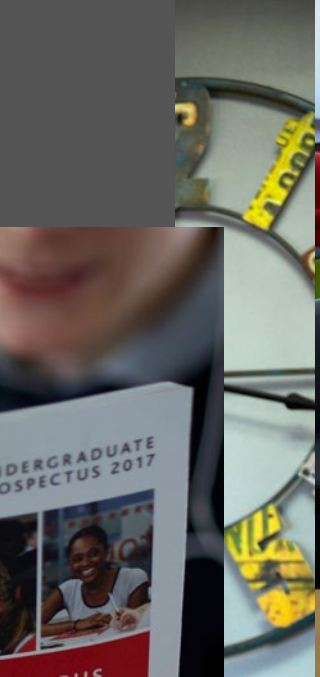
//Post 16 Transport - Travel Allowance Payments

Where no suitable Warwickshire County Council or public transport operates, an annual travel allowance of £110 (or £220 if the student is from a low-income family) is available. In order to qualify, students need to be attending the nearest school Sixth Form, college, or other training provider to home which offers the course studied, and the distance from home to the nearest

bus-stop/pick-up point needs to be more than two miles. Students are free to spend the allowance in whatever way best meets their transport needs, but sustainable solutions such as cycle purchase are encouraged.



//Kingsbury has a strong academic emphasis, and public examination results both at Key Stage 3 and GCSE are consistently good and are still improving. There is real achievement in a wide range of both academic and vocational subjects. Our lessons are characterised by a range of teaching and learning strategies, delivered by qualified subject experts, this will continue into all our Sixth Form lessons. Kingsbury staff dedicate a large proportion of teacher training time to developing teaching and learning.



//Our Sixth Form Course Guide

Our Sixth Form is offering a wide variety of courses at Kingsbury School. In order to provide you with a unique local offer, we have a selection of A Level and BTEC courses. The A Level courses will be studied at Kingsbury School and the BTEC courses at NWHC.

18 Mathematics

20 English

24 Science

30 Communications and Culture

34 Technology

37 Humanities

42 BTEC North Warwickshire & Hinkley College

//Mathematics

AS/A2 | Syllabus Code: (AS) 8371 (A2) 9371 | Exam Board: Edexcel

A Level Mathematics is a challenging course that develops both analytical and problem solving skills. A good grade in Mathematics at A Level will support applications to top universities in many subjects as well as Mathematics itself.

What will I study?

In year 12 students will cover essential pure mathematics, studying topics that are most influential within the real world. Topics include; solving equations, graphs, transformations, coordinate geometry, exponentials and logarithms, trigonometry, differentiation and integration. Alongside the pure modules students will study some elements of mechanics and statistics such as; Newton's laws, kinematics, probability theory and hypothesis testing.

Year 13 looks to further develop the understanding embedded in year 12 across all modules. Pure content is extended to include sequences, functions and vectors, whilst mechanics explores the resolution of forces and moments and students investigate statistical distributions.

Entry Requirements?

Students wishing to study mathematics at A Level must fulfil the sixth form requirements, as well as having a Grade 6 or above in mathematics at GCSE. You will also



need to be confident in your ability, particularly on the algebraic topics you have encountered so far; this will help you to cope with the demands of further studies in this subject.

What will the course help me go on to do?

Having an A Level in mathematics enables you to go on to study many degree courses such as Engineering, Physics, Economics and Mathematics itself. Mathematics is also a key feature for many other courses which can lead to a variety of exciting professional careers: Research, Law, Commerce, Teaching, Medicine, Engineering, Finance, Business and Government Services to list a few.

//Further Mathematics

AS/A2 | Syllabus Code: (AS) 8371 (A2) 9371 | Exam Board: Edexcel

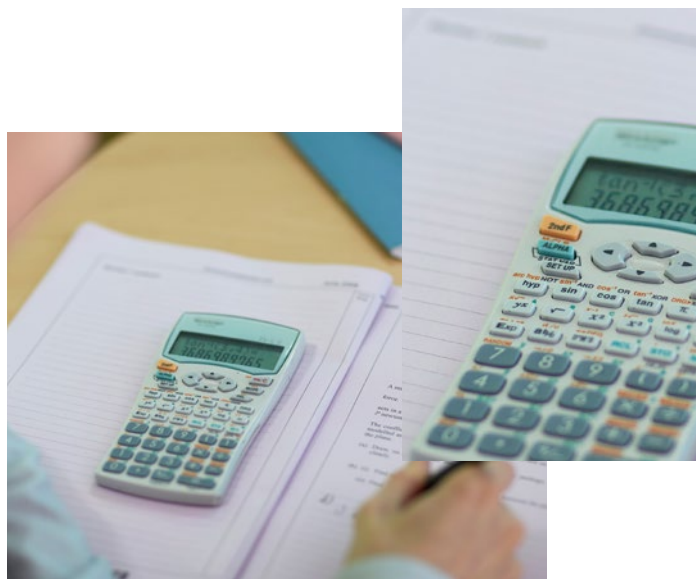
Particularly strong Mathematics students may consider studying Further Mathematics as an addition to Mathematics A Level. This is a challenging course that develops both analytical and problem solving skills. A good grade in both Mathematics and Further Mathematics at A Level will support applications at top universities in many subjects as well as Mathematics itself.

What will I study?

The Further Mathematics A Level course is made up of 50% pure mathematics content, such as the principles of proof, complex numbers, matrices, rational and hyperbolic functions, further calculus and polar coordinates. In addition to this students will study two of the three applied modules; further statistics, further mechanics or decision mathematics. These modules will be decided based upon the strengths and interests of the cohort in order to ensure students gain the most fulfilment from this course.

Entry Requirements?

Students wishing to study Further Mathematics at A Level must fulfil the sixth form requirements, as well as having a Grade 8 or 9 in Mathematics at GCSE. It is essential that you take Mathematics A Level alongside this course and you must have a real enthusiasm for Mathematics as this is a demanding course.



What will the course help me go on to do?

Having an A Level in both Further Mathematics and Mathematics enables you to go on and study a variety of subjects at university. Many universities ask for Further Mathematics as a desirable subject when applying for degrees in Mathematics, Science and Engineering. There are a number of jobs where having Further Mathematics knowledge will be a great benefit. In industry Mathematics is used to stay one step ahead of hackers and it is essential for careers involving the internet and telecommunications, weather forecasting, conservation management, working on the stock market and assessing risks of lending money.

//English Literature

AS/A2 | Syllabus Code: (AS) 7711 (A2) 7712 | Exam Board: Edexcel

This course will encourage you to develop an interest in and enjoyment of English Literature, through reading widely, critically and independently, across centuries, genre and gender, and through experience of an extensive range of views about texts and how to read them. You will have the opportunity to apply your studies to both coursework and examinations, which will require you to research and focus on a specific text. The course will also require you to link, connect and compare a wide range of whole texts and extracts. This course is for students who have a passion for reading!

What will I study?

Learners will study the three components of the A2 qualification evenly over the full two years. Paper One is the 'Love Through the Ages' section, worth 40% of the qualification. Under this title, learners will explore Poetry, Shakespeare and a pre-1900 Prose texts. Paper Two, worth 40% of the qualification, explores Modern Texts, further developing analytical and comparative skills. Both examinations will be comprised of both Seen and Unseen elements. The final component, worth 20% of the qualification, is a comparative critical study essay, giving our learners the chance to express themselves through the study of personally chosen texts.

Drama, Poetry and Prose will become the building blocks of the lessons. Critical theory and thinking will become part of the daily routine both in and out of lessons. With texts ranging from 'Tess of the d'Urbervilles' to 'The Handmaid's tale', writers including Carol Ann Duffy, Shakespeare and Dickens, our learners will go on a journey through the ages and genres becoming experts in the different text types, cultural experiences and Literature.

Entry Requirements?

To study A Level English Literature you must have achieved a Grade 6 in both English Language and Literature.

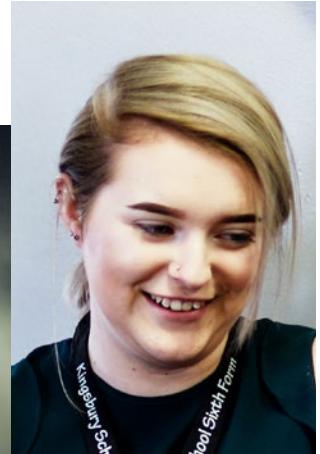
What will the course help me go on to do?

Universities place great value on A Level Literature, therefore you will be presented with an array of possible options. Many students who study A Level Literature will go on to study Law, Publishing, Philosophy or Journalism. The transferable skills you will develop whilst studying literature will allow you to meet the demands of employers and universities.

//Drama and Theatre Studies

AS/A2 | Syllabus Code: (AS) 8DR0 (A2) 3181 | Exam Board: Edexcel

Students interested in the theory and performance of Drama. Building on the philosophy of the GCSE syllabus, the emphasis is on Drama and Theatre Studies as a practical, intellectual and artistic subject. Students examine the use of theatrical forms and genre in relation to the exploration and performance of plays. Students also study how plays relate to the social, cultural and historical contexts in which they are created and / or performed. There are subject content links with many subjects including A Level Media, English, History, Art & Dance.



What will I study?

The A Level qualification is split into Component 1 (Internally Assessed), Component 2 (Internally Assessed) and Component 3 (Externally Assessed). Component 1 is worth 40%, Component 2 is worth 20% and Component 3 is worth 40% of the overall qualification. Devising (Component 1) is composed of a devised original performance piece using one key extract and a theatre practitioner as stimuli. Exploration and Performance (Component 2) is composed of a group performance of on key extract from a performance text and either a monologue or duologue from a different performance text. The skills acquired in this unit are supplemented by the theory required for the written examination (Component 3) in which students realise and interpret an extract from an unseen performance text.

Entry Requirements?

You are not required to have studied Drama in advance, but if you studied Drama as a GCSE subject, you must have achieved Grade C or above.

What will the course help me go on to do?

Entry into higher education to study drama, theatre studies and related courses, as well as careers in the performing arts industry. Drive, confidence, skills and experience for a successful future. Credible value for students at both higher education and in chosen careers.

//Film Studies

AS/A2 | Syllabus Code: (AS) 2181 (A2) 3181 | Exam Board: WJEC

The Film Studies A Level offers a chance to explore, create and deconstruct film from a range of perspectives, genres and origins. Immerse yourself in every element of film and advance from learning about auteurs to becoming one. Analytical, research and deeper thinking are just some of skills you will require and be stretched in. Whether it is behind the camera, in front of it, studying it, writing for it or evaluating it, if you have a passion for the Performing Arts, English or Media, this could be the course that challenges you and pushes you to another level.

What will I study?

The AS and A2 course, when combined, are comprised of 45% coursework and 55% examinations. This is a great chance to use skills both in a practical way and in exam conditions. The AS year is made up by two units. Unit one, the coursework element 'Exploring Film Form,' includes one analysis of how the micro aspects of a chosen extract from a film of your choice produce meanings and responses, in a 1500 word essay. The second element of the unit is a creative project based on a film sequence or short film. Both allow individuality and creativity. Unit two, the external examination element 'British and American Film,' will require you to answer questions linked to (a) Your response to stimulus material based on producers and audiences of film (b) Topics in British Film and (c) US Film -Comparative study of two films. The exam would give you a chance to show the skills developed throughout the year.

The second year, A2, further encourages that individuality and

real depth of specialised knowledge in the subject. Unit three (25% of the overall mark) is comprised of 'Film Research and Creative Projects.' This consists of a small-scale research project and a separate creative project, both being opportunities to delve into the favourite directors, genres or own specialist areas. Unit four (25% of the overall mark), is the final examination element, 'Varieties of Film Experience: Issues and Debates', consisting of questions on World Cinema topics, Spectatorship topics and question allowing a critical study of a Single Film.

Entry Requirements?

You must meet the Sixth Form entry requirements of 5A* to C, including English and Maths. You need to have gained at least a Grade 6 in GCSE English. If you have studied GCSE Media Studies or Drama and achieved at least a B grade, this could be a real option for you also.

What will the course help me go on to do?

Film and all of the elements linked to it are becoming ever more present in the world. Film Studies naturally lends itself to starting down the path of careers in film or television, journalism, marketing, advertising or any medium linked to the Media. The depth of analysis required supports studies in English and the creative elements blend well with those that wish to pursue the Performing Arts. To understand Film completely, you will develop skills in finance, need a grasp of the legal elements involved, deconstruct every facet of the Film Industry. By knowing how the Film Industry operates you will be able to decode messages more skilfully and engage with a wider range of topics that interest you.

//Media Studies

AS/A2 | Syllabus Code: (AS) 7571 (A2) 7572 | Exam Board: AQA

Media Studies will help you to develop a number of skills including, an ability to analyse how media products are constructed, how to produce media products across different platforms – either on your own or as part of a team, how to do individual research and how to evaluate your own and others media products. You can study this at AS Level and A Level however the AS Level marks do not feed into the A Level qualification.

What will I study?

The A Level course has 2 external examinations each worth 35% and a Non-Exam Assessment which is worth 30% of the total course. A Level Media Studies engages students in the in depth study of media products in relation to the four areas of the theoretical framework:

- Media language
- Media representation
- Media industries
- Media audiences

Students are required to study media products from all of the following media forms:

- Audio-visual forms (TV, film, radio, advertising and marketing, video games and music video)
- Online forms (social and participatory media, video games, music video, newspapers,



magazines, advertising and marketing)

- Print forms (newspapers, magazines, advertising and marketing).

Entry Requirements?

To study A Level Film Studies you must have achieved a grade B in both English Language and Literature.

What will the course help me go on to do?

Due to the skills required for Film Studies, Universities appreciate it when a learner wishes to pursue courses in English, Media, Journalism or Expressive Arts. This is a wonderful way to develop your own creativity and voice and obviously is a great first step on the path to being involved in theatre or Film.

//Biology

AS/A2 | Syllabus Code: (AS) 8371 (A2) 9371 | Exam Board: Edexcel

Biology is the study of living organisms and how they interact with each other. We study the fundamental principles of Biology, including Biochemistry; Cell structure, Physiology and Ecology. Practical work is an integral part of the course and you will learn to think critically about aspects of Biology that impinge on everyday life. The aims of A Level Biology are:

- To understand essential Biological facts, concepts and principles.
- To promote the importance of experimental work.
- To realise that Biology plays an important role in our society
- To give a sound base for students who simply wish to study Biology to A Level, but at the same time provide an excellent foundation for Science degrees at university

What will I study?

The following modules will be studied over two academic years:

Module 1- Development of practical skills in Biology

- Skills of planning, implementing, analysis and evaluation

Module 2 - Foundations in Biology

- Cell structure
- Biological molecules
- Nucleotides and nucleic acids
- Enzymes
- Biological membranes
- Cell division, cell diversity and cellular organisation

Module 3- Exchange and Transport

- Exchange surfaces
- Transport in animals
- Transport on plants

Module 4- Biodiversity, Evolution and Disease

- Communicable diseases, disease prevention and the immune system
- Biodiversity
- Classification and evolution

Module 5 - Communications, Homeostasis and Energy

- Communication and homeostasis
- Excretion as an example of homeostatic control
- Neuronal communication
- Hormonal communication
- Plant and animal responses
- Photosynthesis
- Respiration

Module 6- Genetics, Evolution and Ecosystems

- Cellular control
- Patterns of Inheritance

- Manipulating genomes
- Cloning and biotechnology
- Ecosystems
- Populations and sustainability

Assessment

Examination 1 : Biological Processes, assesses content from modules 1, 2, 3 and 5

- 2 hours 15 minutes written paper
- 100 marks
- 37% of total A Level

Examination 2: Biological Diversity, assesses content from modules 1, 2, 4 and 6

- 2 hours 15 minutes written paper
- 100 marks
- 37% of total A Level

Examination 3: Unified Biology, assesses content from modules 1-6

- 1 hour 30 minutes written paper
- 70 marks
- 26% of total A Level

Non exam assessment: Practical endorsement in Biology

Entry Requirements?

At least two GCSE Grade B's in Core Science, Additional



Science and Biology, Chemistry, or Physics and a minimum Grade 5 in GCSE Mathematics.

What will the course help me go on to do?

Biology can be combined with any other subjects but goes particularly well with Chemistry, Psychology, Physics and Mathematics. Biology can be used as an entry qualification for a wide variety of courses at higher education. These include traditional Biological topics, medicine, dentistry, midwifery, physiotherapy, sports science and environmental science.

//Chemistry

AS/A2 | Syllabus Code: (AS) H032 (A2) H432 | Exam Board: OCR

Chemistry at advanced Level is a prerequisite for many courses in Higher Education and for many areas of employment. The primary reason for choosing to study Chemistry would be because you enjoyed studying Chemistry at GCSE. OCR Advanced GCE Chemistry is a modern and relevant course that develops an understanding of Chemistry through studying the content but also looks at new and exciting applications of the science in the 'real' world.

Chemistry is a central science and impacts on all aspects of our lives. An understanding of Chemistry is necessary to all other sciences from astronomy to zoology. All of the materials used by engineers and technologists are made by chemical reactions and we all experience chemical reactions continuously, whether it be breathing or baking a cake, driving a car or listening to a battery powered MP3 player.

Chemistry is concerned with all aspects of molecules, their physical and chemical properties, their composition and structure their synthesis and use in the 21st century.'

What will I study?

The following modules will be studied over two academic years:

Module 1 : Practical skills in Chemistry

- Skills of planning, implementing, analysis and evaluation

Module 2 - Foundations in Chemistry

- Atoms, compounds, molecules and equations
- Amount of substance
- Acid-base and redox reactions
- Electrons, bonding and structure

Module 3: Periodic Table and Energy

- The Periodic Table and Periodicity
- Group 2 and the halogens
- Qualitative analysis
- Enthalpy changes
- Reaction rates and equilibrium

Module 4: Core Organic Chemistry

- Basic concepts
- Hydrocarbons
- Alcohols and haloalkanes
- Organic synthesis
- Analytical techniques

Module 5: Physical Chemistry and transition elements

- Reactions rates and equilibrium
- pH and buffers

- Enthalpy, entropy and free energy
- Redox and electrode potentials
- Transition elements

Module 6: Organic Chemistry and analysis

- Aromatic compounds
- Carbonyl compounds
- Carboxylic acids and esters
- Nitrogen compounds
- Organic synthesis
- Chromatography and spectroscopy

Entry Requirements?

At least two GCSE Grade B's in Core Science, Additional Science and Biology, Chemistry, or Physics and a minimum Grade 6 in GCSE Mathematics.

What will the course help me go on to do?

Chemistry is a long established and respected qualification that can allow progression into a number of career areas, for example, the chemical, chemical engineering, materials science and biotechnology industries. In addition, Chemistry is essential for the medical field, pharmacy and environmental science. Chemistry is also a well-respected subject in its own right and suitable for entry into a wide range of other professions.



//Physics

AS/A2 | Syllabus Code: (AS) H156 (A2) H456 | Exam Board: OCR

A Level Physics is designed to foster a systematic approach to problem solving as well as answering some of the most important fundamental questions about the universe around us. Situations in everyday life can be simplified into models that show how most factors affect each other, and so affect the situation. By doing this we can build up a picture of how things such as motion, gravity, electricity and light are all tied together, and learn how to apply this in the real world. Physics is a very broad subject involving experiment and observation as well as theory and mathematics - students are encouraged to question their learning and discuss with their peers.

What will I study?

Physics A Level content is split into six teaching modules: Modules 1 to 6, combined with the Practical Endorsement (controlled assessment), constitute the full A Level.

Module 1 - Development of practical skills in Physics

- Skills of planning, implementing, analysis and evaluation

Module 2 - Foundations in Physics

- Quantities and units

Module 3: Forces and motion

- Motion
- Forces in action
- Work, energy and power
- Materials
- Laws of motion and momentum

Module 4: Electrons, waves and photons

- Charge and current
- Energy power and resistance
- Electrical circuits
- Waves
- Quantum physics

Module 5: Newtonian World and Astrophysics

- Thermal physics
- Ideal gases
- Circular motion
- Oscillations
- Gravitational fields
- Stars
- Cosmology

Module 6: Particles and Medical Physics

- Capacitance
- Electric fields
- Magnetic fields
- Particle physics

Entry Requirements?

At least two GCSE Grade B's in Core Science, Additional Science and Biology, Chemistry, or Physics and a minimum Grade 6 in GCSE Mathematics.

What will the course help me go on to do?

Studying Physics helps to develop key transferable skills, the ability to reason clearly, communicate complex ideas and practical approaches to problem solving. Students taking A Level Physics have a solid foundation for further study in a number of areas including Chemistry, Engineering, Medicine and allied professions, Mathematics, Geology and Finance to name a few.



//French

AS/A2 | Syllabus Code: (AS) 1651 (A2) 2651 | Exam Board: AQA

A Level French helps students develop confident, effective communication skills in French and a thorough understanding of the culture of countries and communities where French is spoken. It develops an interest in, and enthusiasm for, language learning and encourages students to consider their study of the language in a broader context. This four-unit specification requires students to develop their ability to write and speak in French with accurate grammar and syntax for a range of purposes and to understand written or spoken French in a variety of contexts and genres.

What will I study?

AS French consists of two units;

Unit 1 - is a 2 hour written examination covering listening, reading and writing,

Unit 2 - is a 35 minute speaking test (including 20 minutes preparation time). The topics covered at AS level are Media-television, advertising and communication technology; Popular culture - cinema, music fashion/trends; Healthy living/ Lifestyle - sport/ exercise, health and well-being and holidays; Family/ Relationships - relationships within the family, friendships, marriage/partnerships and changing roles within the home.

A2 French again comprises of two units;

Unit 3 - is a 2 hour 30 minute listening, reading & writing exam.

Unit 4 - is a 35 minute speaking test (including 20 minutes

preparation time). To complete the A2 students must study two cultural topics along with the three remaining units of Environment - pollution, energy and protecting the planet; The Multicultural Society - immigration, integration and racism; Contemporary Social Issues - wealth and poverty, law and order and impact of scientific and technological progress. The cultural topics are a target language-speaking region/community and an author from a target language-speaking country.

Entry Requirements?

This course is challenging and would be particularly suitable for students who have studied GCSE French at a higher level; at least a grade B at GCSE would be required.

What will the course help me go on to do?

You may think that languages aren't really relevant to today's modern world; everyone speaks English, right? Wrong. Languages are all around us; they are used in so many situations whether at work, on holiday or just casually in day-to-day life - we live in a multilingual global society. Choosing an A Level language is a really smart move if you want a fascinating subject that offers you a range of career possibilities at the end and they can be a lot of fun along the way. Learning a language is a never-ending process; languages are constantly changing, bringing in new words and getting rid of old ones. This is one of the great things about learning a language, you're always up to speed with the world! You may just want to turn your back on French after GCSE, but the skills and qualifications that you gain from studying a language at A Level are incredibly important tools to have under your belt.

//ICT

AS/A2 | Syllabus Code: (AS) H160 (A2) H560 | Exam Board: AQA

This exciting new specification brings the study of ICT up to date for the 21st century. It has the backing of a range of industries, higher education and the National Computing Centre. The key points of this specification are that:

- It allows greater opportunities for practical work than previous specifications.
- Practical work can be carried out using a wide range of software and hardware of a centre's choice.
- It allows for greater flexibility in modes of delivery.
- Students can be truly engaged in their studies by becoming active investigators rather than passive learners.
- There are greater opportunities than in previous specifications for effective personalised learning, for target setting and for differentiated outcomes.
- It builds on, rather than replicates, students' functional ICT skills.

What will I study?

AS ICT consists of two units:

Unit 1 - Practical Problem Solving in the Digital World

Unit 2 - Living in the Digital World

Students sit a 1 hour 30 minute written examination for each unit. Both examinations consist of short answer questions and structured questions and both account for 50% of the AS grade and 25% of the A Level grade.

A2 ICT again comprises of two units:

Unit 3 - The Use of ICT in the Digital World

Students sit a 2 hour written examination which includes structured questions based on pre-release material and questions requiring extended answers. This accounts for 30% of the final A Level grade.

Unit 4 - Coursework: Practical Issues Involved in the Use of ICT in the Digital World

Students complete a project involving the production of an ICT-related system over an extended period of time. This accounts for 20% of the final A Level grade.

Entry Requirements?

You will need a Grade 5 in English and Maths and grade C in GCSE IT.

What will the course help me go on to do?

The specification has been developed for students who wish to progress to higher education or to the world of work, where understanding how ICT can be used in society and organisations, and the implications of its use, will be a valuable asset. Ideas for teaching, including practical exercises, will be provided in the Teacher Resource Bank and support meetings for this specification.

//Business Studies

AS/A2 | Syllabus Code: (AS) 7131 (A2) 7132 | Exam Board: AQA

Fancy yourself as the next Alan Sugar? Want to know how Richard Branson made his millions? Keen to study real life businesses and what makes them successful (or not successful)? Then Business Studies at Post 16 is for you!

What will I study?

Students of this course will study business in a variety of contexts (e.g. large/small, UK focused/global, service/manufacturing) and consider:

- The importance of the context of business in relation to decision making
- The interrelated nature of business activities and how they affect competitiveness
- The competitive environment and the markets in which businesses operate
- The influences on functional decisions and plans including ethical and environmental issues
- The factors that might determine whether a decision is successful e.g. the quality of data and the degree of uncertainty
- How technology is changing the way decisions are made and how businesses operate and compete
- The impact on stakeholders of functional decisions and their response to such decisions

- Use of non-quantitative and quantitative data in decision making (including the interpretation of index numbers and calculations such as ratios and percentages).

Strategic decision making (A Level only)

The study of strategic decision making should build on the study of decision making in the functional areas. Students should consider:

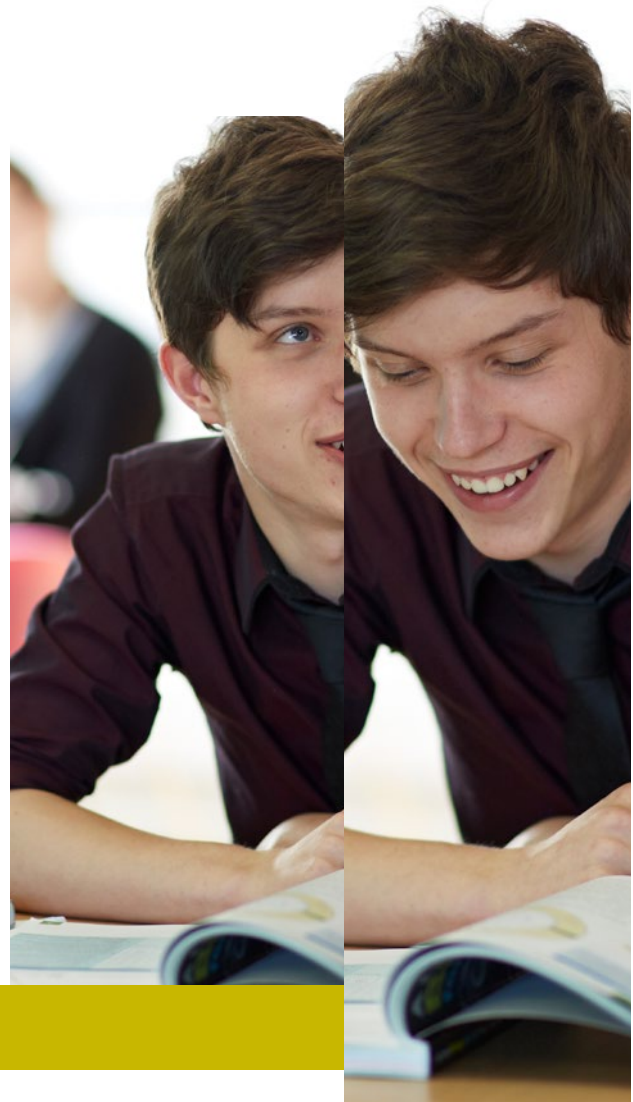
- The impact of technology on strategic decision making
- The influences of corporate social responsibility, ethical and environmental issues on strategic decisions
- The difficulties in forecasting future trends
- The importance of assessing feasibility and risk when making strategic decisions
- The impact on stakeholders of strategic decisions and their response to such decisions

Entry Requirements?

You will need a Grade 5 in both Maths and English. No prior Business Studies Knowledge is required.

What will the course help me go on to do?

The course is hugely relevant to the business world, so not only will it provide a stepping stone to higher education courses and apprenticeships, but it will prepare you for a wide range of employment opportunities. Whether it be procurement (business shopping) in a large corporation, social media manager for your favourite brand, or managing fundraising in a charitable organisation, Business Studies gives you the know how to stand out from other applicants. The options are diverse, with past Business Studies students including Radio 1 host Nick Grimshaw and rugby player Manu Tuilagi. Of course, you will also be inspired to set up your own business enterprise.



//Design Technology

PRODUCT DESIGN, 3D DESIGN or FASHION & TEXTILES | Exam Board: WJEC

A course in Design and Technology offers a unique opportunity to identify and solve real problems by designing and making products. Design and Technology develops students interdisciplinary skills and their capacity for imaginative, innovative thinking, creativity and independence.

What will I study?

UNIT 1 - PROD1 Materials, Core Technical Principles and Core Designing and Making Principles

- 50% of AS, two hour written paper, 80 marks.
- Based primarily on Materials and Components and consisting of three sections
- Section 1 contains compulsory limited response questions
- Section 2 offers a choice of one question from two
- Section 3 contains one compulsory question with an extended answer.

UNIT 2 - PROD2 Learning Through Designing and Making

- 50% of AS, Coursework - approximately 35 hours, 80 marks.
- Written design portfolio

- Manufactured outcomes
- Coursework may take on a number of forms: a simple design-and-make project, two smaller projects or a portfolio of work.

UNIT 3 - PROD3 Design and Manufacture

- 50% of A Level, two hour written paper, 100 marks each.
- Based primarily on Design and Manufacture and consisting in two sections. Candidates answer three questions: one from three in each section, plus a final question from either section.
- Includes synoptic assessment.

UNIT 4 - PROD4 Design and Making Practice

- 50% of A Level, Coursework - approximately 40 hours, 100 marks.
- Written design folder
- Manufactures outcomes
- Students may submit evidence of a simple, substantial designing and making activity.

//Design Technology

PRODUCT/3D DESIGN | Syllabus Code: (AS) 1551 (A2) 2551

FASHION & TEXTILES | Syllabus Code: (AS) 1561 (A2) 2561

Entry Requirements?

Students must have achieved a minimum grade B at GCSE in either Design Technology: Resistant Materials or Textiles and a Grade 5 in English Language.

What will the course help me go on to do?

Product Design develops all key skills and a capacity for imaginative, innovative thinking together with creativity and independence. Design and Technology A Level qualifications enable students to participate successfully and with confidence in an increasingly technological world. The course will be of interest to a wide range of students including those who intend to pursue a career in Product Design, Engineering, Architecture, Furniture Design, Jewellery Making or Fashion Industries.

Those with other aspirations can also benefit from the many transferable skills inherent in the study of Product Design. Students who have followed a GCSE Design and Technology course in either Resistant Materials or Textiles will be able to use their skills at AS and A2 and make a product in a material of their choice.



//Food Science & Nutrition (Food Technology) Level Diploma

Syllabus Code: 600/4386/6 | Exam Board: WJEC

This new course will develop your food technology skills and offer you the chance to gain a deeper understanding of the nutritional requirements of different people and develop skills in order to help meet their needs. Students will have the opportunity to learn about the relationship between the human body and food as well as practical skills for cooking and preparing food. Students will be able to consider employment in a range of different industries including the food and drink sectors of hospitality, catering, food production and food retail. This course provides plenty of opportunities to show creativity and innovation through practical work and coursework.

What will I study?

The WJEC Level 3 Diploma in Food Science and Nutrition is made up of four units:

Unit 1: Meeting the Nutritional Needs of Specific Groups

Unit 2: Ensuring Food is Safe to Eat

Unit 3: Experimenting to Solve Food Production

Unit 4: Current Issues in Food Science and Nutrition

Entry Requirements?

GCSE English Grade 5 or above. GCSE Maths Grade 5 or



above. GCSE Food Technology C or above or GCSE in another Design Subject B or above.

What will the course help me go on to do?

Level 3 Diploma in Food Science and Nutrition can lead to a wide variety of careers such as, food production, food retail, sports nutrition, hospitality and catering.

//History

AS/A2 | Syllabus Code: H505 | Exam Board: OCR

Think of a career that you want to pursue, think of the skills that you need when you follow that career. The study of History will develop your skills of analysis and interpretation of evidence to reach your own conclusions. You will be encouraged to defend and debate your views. History will teach you the skills that are essential for changing the world. History can complement a wide range of other courses.

What will I study?

The History course has four units of study.

Unit 1 – England 1547-1603 the late tutors

Students will study England 1547-1603: The Late Tudors. The enquiry element of this unit is a source-based study which immediately precedes or follows the outline period study.

Unit 2 – Democracy & dictatorships 1919 - 1963

Students will study the USA in the 19th Century: Westward expansion and Civil War 1803-c. 1890.

Unit 3 – Thematic Study and Historical Interpretations

Students will study popular culture and the witchcraze of the 16th and 17th Centuries. The thematic study will cover a period of at least 100 years, and three in depth studies of events, individuals or issues that are key parts of the theme.

Unit 4 – Topic Based Essay

Students will complete a 3000-4000 word essay on a topic of their choice, which may arise out of content studied elsewhere in the course.

Entry Requirements?

Students wishing to study History at A Level will be expected to achieve a grade B or above in GCSE History.

What will the course help me go on to do?

Students who specialise in History can go on to become historical researchers, work in heritage organisations or become teachers. History also supports other career paths, like journalism, politics, law, social work and public services.

//Geography

AS/A2 | Syllabus Code: (AS) 1031 (A2) 2031 | Exam Board: AQA

Geography is possibly the most versatile and useful of all the A Level subjects. It deals with current issues that impact us and the world around us, while providing students with relevant and transferable skills that employers want. It combines well with a host of other A Level subjects and supports learning across the curriculum.

What will I study?

The students will study core physical and human geography, as well as two optional topics. Physical and Human Geography (Rivers, Coasts, Population and Energy Issues)

Applied Geography (Field work based on River Studies and Urban Environments). Three options from:

- 1) Plate Tectonics and Associated Hazards
- 2) Weather and Climate and Associated Hazards.
- 3) Ecosystems: Change and Challenge
- 4) World Cities
- 5) Development and Globalisation
- 6) Contemporary conflicts and challenges. Geographical Issue Evaluation



Entry Requirements?

Students are required to have achieved a grade B or above in GCSE Geography or Grade 6 in English.

What will the course help me go on to do?

Geographers are said to be the most employable people, since they have developed a wide range of transferable skills that are appropriate to many career paths. Some A Level Geography students go on to study Geography at University and eventually follow careers paths into a range of areas such as planning, landscape management, conservation, surveying and teaching.

//Sociology

AS/A2 | Syllabus Code: (AS) H180 (A2) H580 | Exam Board: OCR

Sociology is the study of people in society. Everybody is a part of society. Importantly, this society has helped to shape who you are and your experiences in life so far, but how much about it do you understand? Have you ever wondered why it is women, and not men, who tend to do the bulk of the housework and childcare; why in every town and city there is a wealthy and poor neighbourhood; why overall girls achieve far better exam results than boys; why religion seems to be declining; or why the police seem to target younger rather than older people? If you have then Sociology might be the subject for you.

What will I study?

There is, perhaps, more of a need than ever to understand the world we live in. Just think about the endless public debate there is on issues such as the high crime rates in our inner cities, boys' underachievement in school, the effects of divorce on children, racism and the police, the effects of the media on violent behaviour and so many more. They are the subject matter of countless views and opinions, many of which may be ill-informed or prejudiced. Many views are expressed simply from personal (and very often limited) experience. This is where Sociology comes in - because they are all social issues. The literal meaning of the word 'Sociology' is the

'science of society'. The interaction of people, ourselves as members of society is what Sociology is all about. Social events and changes do not occur by accident. Sociology attempts to bring a systematic understanding of our knowledge of what goes on around us - locally, nationally and even internationally.

Entry Requirements?

Students wishing to study Sociology at A Level are expected to have achieved a grade B or above at GCSE in Religious Education.

What will the course help me go on to do?

The course provides an excellent basis for progression to any career or University course. Sociology will support a career in a wide range of areas, including human resources, social and welfare work, police, local government, advertising and management. The analytical skills developed in this course are particularly valued by employers.

//Psychology

AS/A2 | Syllabus Code: (AS) 7181 (A2) 7182 | Exam Board: AQA

Psychology is the study of the brain and behaviour. We study the fundamental principles of experimental working within Psychology and several of the core units of Psychology study and research, from how memory works to the causes of social conformity. The course is designed to encourage all students to critically evaluate research and develop critical thinking skills.

What will I study?

If studying the AS Psychology course there are two modules, each of which contains three topics. Each topic has the core study and a critical issue study. In the first module the topics are: Attachment and Bonding (Developmental Psychology), Memory and Eye-Witness Testimony (Cognitive Psychology) and Social Influence (Social Psychology). The second module topics are: Approaches in Psychology (various areas), Psychopathology (Clinical/Forensic Psychology) and Research Methods (core methodology).

If studying the A2 Psychology course, all the above content with the addition of Biopsychology (Neuropsychology with Biological bases) are taken in the first two modules. In addition a third unit is studied. The final unit begins with Issues and debates in Psychology (a philosophical approach to the history of Psychology and its core debates). There are then several option topics which may include Cognition and Development in which you study how

we develop our understanding of the physical world, Schizophrenia's symptoms and the social, biological and evolutionary causes.

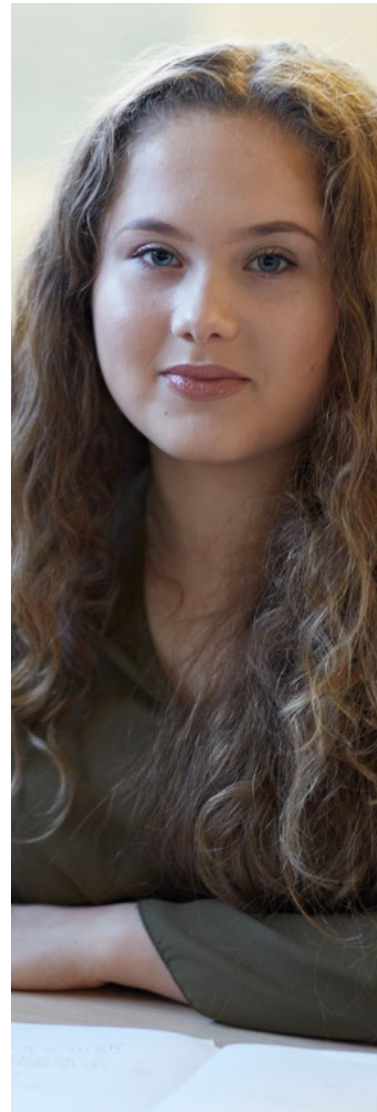
Entry Requirements?

Students wishing to study Psychology at AS level must have received a grade B in English Language or English Literature at GCSE, a Grade 5 in Mathematics at GCSE and either BB in double award Science GCSE or two B grades from triple award Science GCSE. Candidates intending to take A2 Psychology should additionally have received a Grade 6 in Mathematics GCSE. Psychology requires a high level of literacy and a core of scientific understanding. It also requires data analysis and this is most highly pronounced in the A2 course where statistical testing can make up 10% of the examination marks. GCSE Psychology is not a requirement to take Psychology AS or A2 level.

What will the course help me go on to do?

Having an AS or A2 level qualification in Psychology can give you a strong basis for most social sciences, further study in Psychology, education and management. The study of Psychology can lead to a variety of exciting professional careers: Various different branches as a professional Psychologist (clinical, forensic, occupational, developmental and more), human resources, management consultancy, education and counselling amongst many other careers.

Please note the AS Psychology course does not run on to the A2 Psychology course. Candidates taking A2 Psychology will take their three module exams at the end of year 13 in 2018, whereas those taking AS Psychology will take their two module exams at the end of year 12 in 2017. There are no controlled assessments or coursework assignments.





//North Warwickshire & Hinckley College

In order to provide Kingsbury School students with a high quality education, a unique local offer and the advice, support and knowledge that comes with an experienced post 16 centre we have secured partnership with North Warwickshire & Hinckley College.

North Warwickshire & Hinckley College is a large Further Education college which has extensive partnerships with employers and universities. The college has been formally recognised for its outstanding work with individuals, communities and employers and in March 2012 was rated by Ofsted as being a good college with outstanding features.

Through this exciting partnership, Kingsbury School students will have the opportunity to study a range of BTEC qualifications alongside A levels in state of the art facilities with specialist, experienced tutors. The college invests heavily in its facilities to ensure they are industry standard, and last year a brand new purpose built advanced engineering centre opened at the Nuneaton Campus.

BTEC qualifications are an alternative to A Levels. They are level 3 qualifications recognised by employers and universities. The college also offers degree level study opportunities and works in partnership with a number of Universities including Birmingham City University, Coventry University, De Montfort University, Nottingham Trent University and The University of Warwick.

//Advanced Engineering Mechanical and Electrical/ Electronic

BTEC | Exam Board: Edexcel

This is a vocational course that covers a range of subjects associated with Engineering. The course is designed to allow learners to progress to University or directly into employment. The course will include both Mechanical Engineering and Electrical/ Electronic Engineering subjects.

What will I study?

Health & Safety, Electrical & Electronic Principles, Mechanical Principles, Mathematics, Principles & Applications of Electronic Devices & Circuits, Engineering Processes (including practical machining), Programmable Logic Controllers, Engineering Drawing, Computer Aided Drafting and Appropriate Functional Skills. Project, Business Systems, Engineering Design, Electro Pneumatic & Hydraulic systems and Devices, Applications of Welding Technology (including practical welding), Electrical Applications, Further Electrical Principles, Further Mathematics (Depending on demand). Appropriate Functional Skills will also be studied subject to course requirements.

Entry Requirements?

Entry requirements are 5 GCSEs at grade C or better including Mathematics (Grade 5) and a Science or a BTEC First Diploma in Engineering with a merit in Mathematics.

What will the course help me go on to do?

On successful completion of the programme you may progress to: Advanced Apprentices in Engineering, Higher National Certificate/Diploma in Engineering (Mechanical or Electrical/Electronic), degrees in Engineering Including Mechanical, Electrical/Electronic, Civil Engineering, Computer Aided Engineering, Product Design or onto employment.



**North Warwickshire
& Hinckley College**

//Level 3 Subsidiary Diploma in Health and Social Care

BTEC | Exam Board: Edexcel

The 60-credit Level 3 Subsidiary Diploma offers an engaging programme for those who are clear about the area of employment that they wish to enter. It is broadly equivalent to one GCE A Level. Learners may wish to extend their programme through the study of a general qualification such as GCE A Level, through another BTEC qualification or an NVQ.

What will I study?

The programme consists of three mandatory units-180 guided learning hours (30 credits) plus optional units that provide a combined total of 360 guided learning hours or 60 credits.

Mandatory units: Effective Communication; Equality, Diversity and Rights; Health, Safety and Security, plus a number of other optional units that amount to 30 credits. You will also be required to complete a mandatory minimum of 50 hours of work experience in two different care settings. All units are assessed via coursework and through observations while on placement.

Entry Requirements?

You are required to have a minimum of 4 GCSEs at grades A-C. For students completing placements an enhanced CRB will be required at a cost to the student prior to starting the course.

What will the course help me go on to do?

You will be able to progress into employment in the care sector.



**North Warwickshire
& Hinckley College**

//Level 3 Subsidiary Diploma in Travel and Tourism

BTEC | Exam Board: Edexcel

This programme is designed to provide a broad education in Travel & Tourism as a basis for both training leading to employment and Higher Education. This is achieved by ensuring that students develop the general skills, knowledge and understanding that are needed for a range of travel and tourism occupations or professions. This qualification is equivalent to one A Level.

What will I study?

You will study four core units plus two specialist units: Investigating the Travel and Tourism Sector; The Business of Travel and Tourism; The UK as a Destination; Customer Service; Preparing for Employment; and European Destinations. Written work is assessed on an on-going basis. There are no external exams.

Entry Requirements?

You will need a minimum of four grade C's at GCSE. Applicants should be committed and enthusiastic and will be interviewed and assessed for suitability to the programme choice to see what medical requirements are before enrolling on the programme.

What will the course help me go on to do?

Next steps are BTEC National Diploma/Extended Diploma Travel and Tourism. Career opportunities can be found at Travel Agencies, Tour Operators, Tourist Information Centres, Airports, Airlines and Visitor Attractions.



**North Warwickshire
& Hinckley College**

//Level 3 Subsidiary Diploma in Sport

BTEC | Exam Board: Edexcel

This programme is equivalent to one A Level and is designed for those who want to gain a qualification that will enable them to pursue a career in many areas of the sports industry, or onto a BTEC Level 3 Diploma in Sport at the College.

What will I study?

There are seven units to complete during the course, these are: Principles of Anatomy and Physiology in Sport; The Physiology of Fitness; Assessing Risk in Sport; Fitness Testing for Sport and Exercise; Sports Coaching; Fitness Training and Programming; Practical Individual Sports.

Sport consists of seven continuously assessed units. In addition there will be opportunities to play for College sports teams. The course provides the opportunity to develop skills in leadership, teamwork and working with others through residential and other experiences.

Entry Requirements?

At least five GCSEs at Grade A to C, one of which must be Maths (Grade 5), English (Grade 5), Science, or Physical Education. BTEC Level 2 Diploma in Sport and one GCSE from Maths, English or PE at Grade C (Maths Grade 5), GNVQ Intermediate in a related subject or any other Level 2 qualification or appropriate work experience.

What will the course help me go on to do?

After successful completion you can continue your studies at the College to gain a BTEC Level 3 Diploma in Sport or go into employment.



**North Warwickshire
& Hinckley College**

//National Certificate in Children's Play, Learning and Development

BTEC | Exam Board: Edexcel

The BTEC National Certificate in Children's Play, Learning and Development is a Level 3 course. It prepares you to work with children and their families in a variety of settings and environments within the Early Years sector. The qualification will build and develop the necessary practical skills and understanding to provide learners with a firm grounding in the principles of children's care for the progression into employment within the sector of Early Years services.

What will I study?

There are eleven compulsory core units (totalling 720 guided learning hours) plus 800 mandatory placement hours. Students are given the opportunity of gaining a broad understanding of the sector and a specialist understanding of specific aspects of the sector. With successful completion learners will achieve qualified practitioner status (for the 0-8 group).

One unit is assessed through an externally set and

assessed exam. Ten units are assessed through assignment tasks presented in a variety of ways. Each task is designed to assess the required criteria. Of these ten units one assignment is externally set and links to practical experience. A student log book also has to be completed to show practical competency.

Entry Requirements?

5 Grade C passes at GCSE (one in English and preferably Mathematics and Science) or equivalent. Applicants will be interviewed and assessed for suitability. A CRB check is required. At interview learners will need to bring evidence of experience with working with children, plus two references.

What will the course help me go on to do?

If successful there are a variety of potential careers that you can explore, all of which will benefit from your studies, for example Early Years Practitioner in a nursery or school setting. It is also possible for you to progress into careers that require further training as the qualification holds between 80-280 UCAS points. Previous learners have progressed on to become teachers, paediatric nurses, midwives and social workers.



**North Warwickshire
& Hinckley College**

//Level 3 Subsidiary Diploma in Public Services

BTEC | Exam Board: Edexcel

This is a programme for anyone interested in pursuing a career in the uniformed services such as the Police, Fire, Ambulance, Prison/ Probation Services, Army, Navy and Air Force, or wishing to progress to higher education. It is equivalent to one A Level.

What will I study?

Students will study five units: Government, Policies and the Public Services; Leadership and Teamwork; Citizenship and Diversity; Understanding Discipline in the Public Services; Fitness Testing and Training. Your study programme will be a combination of classroom-based learning, with practical sessions and residential trips.

This programme is made up of a combination of practical and theoretical study with continuous assessment, written assignments and evidence gained from residential trips and the comprehensive programme of visiting speakers from the Public Services.

Entry Requirements?

Entry requirements are at least one of the following: 5 GCSEs at Grade C or above; BTEC Level 2 Diploma (min 2 Merit grades). Entry to the programme is subject to an interview with a programme tutor and a follow-up Selection Day, which involves passing a Fitness Test.

N.B. Young people who have a chronic medical complaint (e.g. asthma; colour blindness etc.) are advised to check directly with the service of their choice to see what medical requirements are before enrolling on the programme.

What will the course help me go on to do?

The BTEC Level 3 Subsidiary Diploma is a nationally recognised qualification designed to give you a good understanding of the working practices of all the Public Services. You can either seek employment or progress onto a BTEC Level 3 Diploma (Subject to meeting relevant progression criteria).



**North Warwickshire
& Hinckley College**

//Would you like to study at Kingsbury Sixth Form?

We hope that this prospectus has given you all the information you need about further education at Kingsbury School. If you need any further information about studying at our Sixth Form then please use the contact details below.

ADDRESS

Kingsbury School Sixth Form
Tamworth Road
Kingsbury
Tamworth
B78 2LF

PHONE

01827 872 316

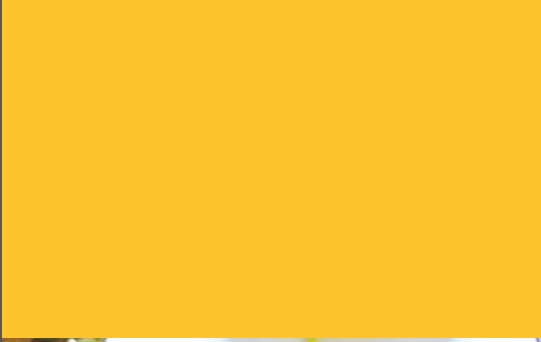
EMAIL

admin4111@welearn365.com

WEB

www.kingsburyschool.co.uk





//Enthuse //Aspire //Achieve

PHONE | 01827 872 316

EMAIL | admin4111@welearn365.com

WEB | www.kingsburyschool.co.uk